

FIGURE 7

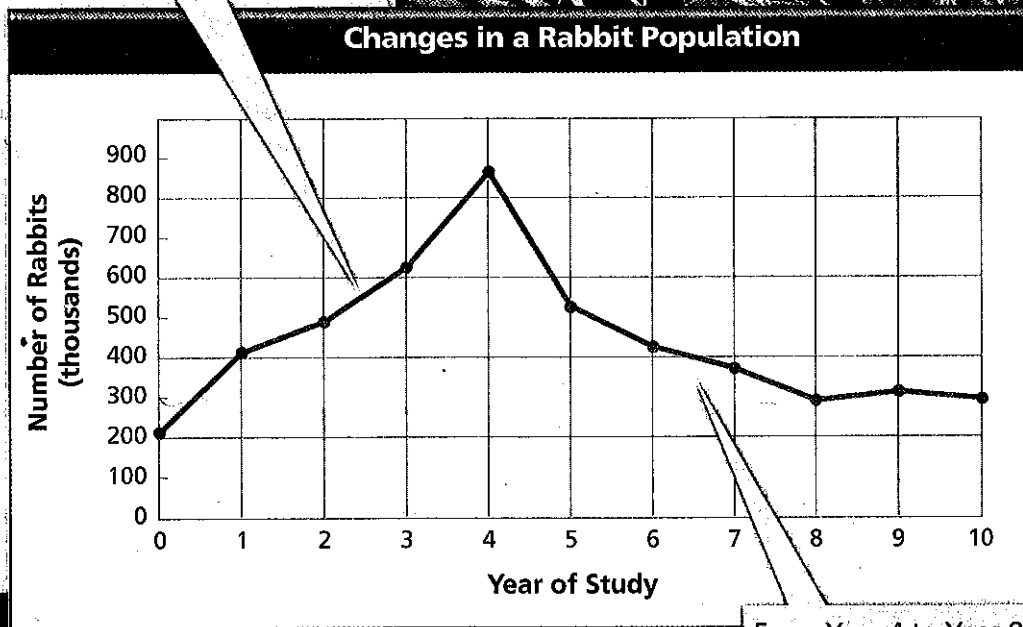
This line graph shows how the size of a rabbit population changed over a ten-year period.

Interpreting Graphs *In what year did the rabbit population reach its highest point? What was the size of the population in that year?*

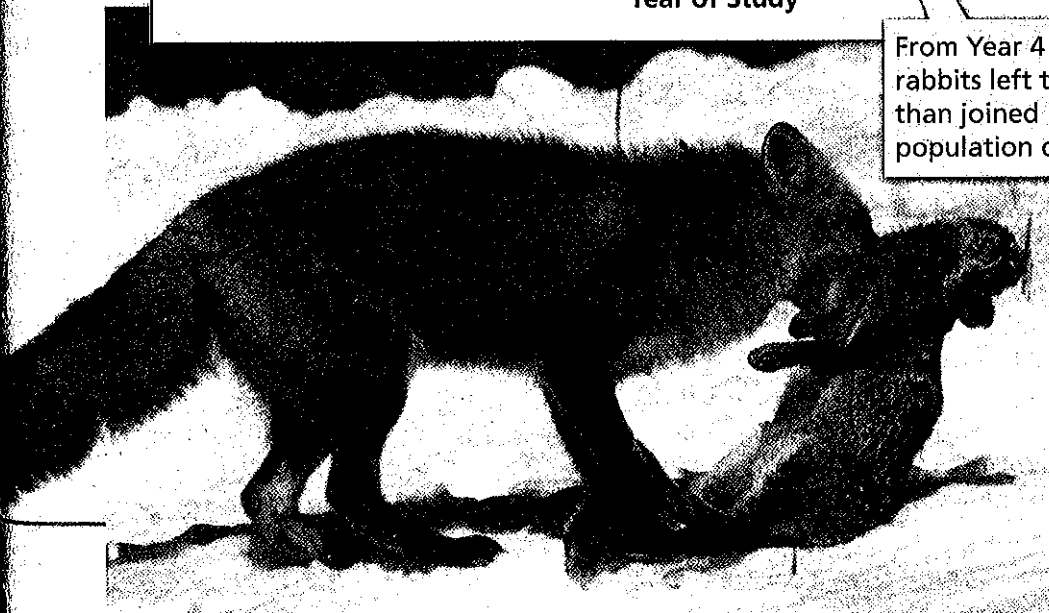
▼ Young cottontail rabbits in a nest



From Year 0 to Year 4, more rabbits joined the population than left it, so the population increased.



From Year 4 to Year 8, more rabbits left the population than joined it, so the population decreased.



◀ Cottontail rabbit caught by a fox